



EARTH

The Environmental And Natural Resource Technology Center



EARTH Center News

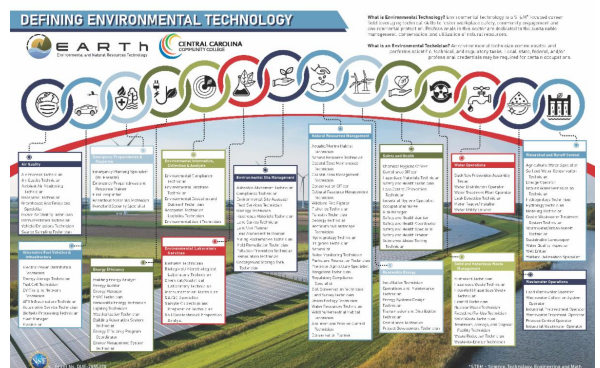
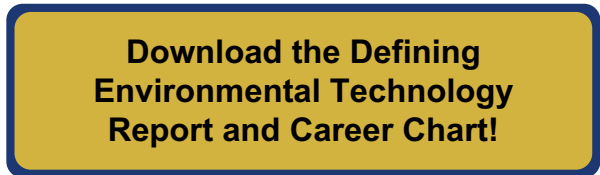
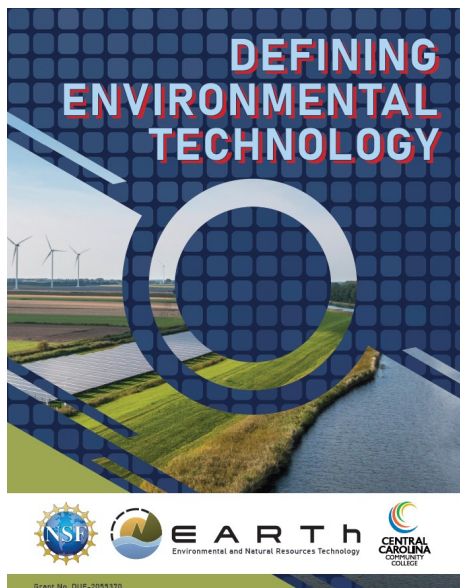
Welcome to the inaugural retrospective edition of the EARTH Center Newsletter! As we wrap up our first year at Central Carolina Community College, we're excited to share the progress and achievements that mark this milestone.

This year, we've seen a tremendous response to our resources, with numerous downloads of the Defining Technology report and our career pathway poster, helping guide students and educators toward the future of environmental and natural resource technology. In May and June, we hosted two successful professional development events, bringing together over 25 instructors dedicated to advancing environmental technology education.

Looking ahead, we're thrilled to announce the development of immersive educational modules and simulations that will provide cutting-edge learning experiences for students in environmental technology courses. Our team will also be attending the NSF ATE PI Conference from October 23-25, 2024—an excellent opportunity to connect and collaborate on the latest NSF ATE projects and innovations from institutions across the United States.

We invite you to stay connected by following the EARTH Center on [LinkedIn](#) and [YouTube](#), where we regularly share updates, educational content, and more. Additionally, consider joining the [EARTH Center Community for Environmental Technology Instructors](#), a private Facebook group aimed at creating a vibrant network of environmental technology educators committed to sharing best practices and innovative teaching methods.

Thank you for being a part of our journey as we continue to innovate and advance opportunities and resources for environmental technology education! Save the date and further connect with the EARTH Center during the ATE Central Office Hour on Nov 13, 2024!



EARTH Center Info Video:



**Save the date for our ATE Central Office Hour session on Nov 13, 2024!
Registration will be open soon!**

Immersive Ed Design

What is Immersive Ed Design?

Immersive education design is defined by the integration of simulation-based learning environments with interactive course modules to create a unified educational experience. This approach goes beyond traditional e-learning by incorporating realistic scenarios where learners can apply their knowledge, make decisions, and see the consequences of their actions in a safe, controlled environment. This process involves close collaboration between subject matter experts, simulation software developers, 3D technical designers and instructional designers to craft interactive, real-world scenarios that complement and enhance the core curriculum. The goal is to provide learners with hands-on, experiential learning opportunities that are directly tied to their course objectives.

A major initiative for the EARTH Center is creating immersive and interactive supplemental material for instructors of Environmental Tech courses.

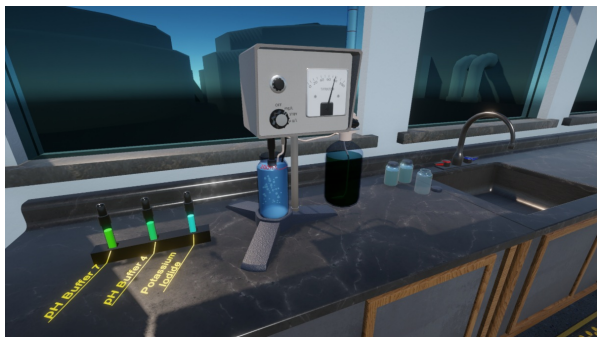
Our Immersive Ed Design team consists of an instructional designer, 3D artists, software developers, and technical designers. We work to create an immersive student experience for complicated or less-than-ideal student learning situations (i.e. time intensive set-up, hazardous conditions, fragile/expensive equipment, etc.)

A web-based platform is being created by the EARTH Center to allow anyone with internet to access these supplemental modules and simulations to further enhance concepts in their classroom!

Does this sound like an opportunity to create material for your coursework? We are always looking to connect with educators and industry partners to further develop the Environmental Tech workforce!



Share your ideas for Immersive Education Design coursework!



Coming soon! Voltage and Polarity Training Simulator - View the Trailer:



Professional Development

The EARTH Center offered two in-person professional development opportunities this summer! In partnership with Dr. Sharyl Majorski and Saginaw Chippewa Tribal College, the Summit for Tribal College Educators was held in May. In June, Nahant Marsh Education Center hosted Environmental Tech instructors in Wapello, IA for an experiential five day event.



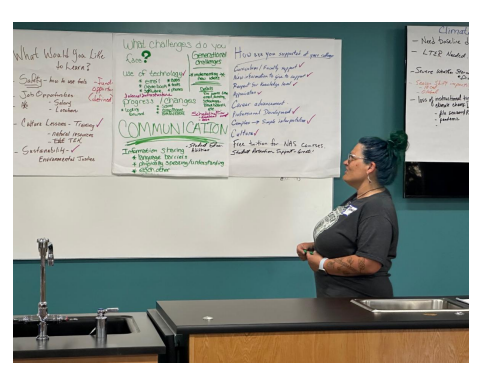
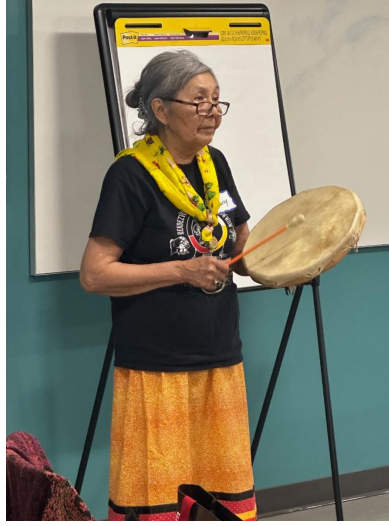
Summit for Tribal College Educators

The Summit for Tribal College Educators was held in May at the Saginaw Chippewa Tribal College in Michigan. It brought together leaders and educators from several institutions to discuss challenges, opportunities, and strategies for advancing environmental technology education in Tribal colleges.

Key topics included the challenges faced by Tribal colleges in implementing and sustaining environmental tech programs, as well as sharing successes and support mechanisms within their institutions. Participants engaged in a dynamic group discussions, exploring common impediments and strategies to overcome them.

The Summit also delved into the effects of climate change on Tribal communities, with insights from Mr. Mike DeSpain on job growth and educational opportunities in environmental technology.

The event concluded with a focus on EARTH Center mentoring services for NSF ATE and TCUP grants, and a hands-on session about the DACUM process (Developing A Curriculum), aimed at shaping future professional development events for Tribal College educators.



EARTH Center Institute at Nahant Marsh

In June 2024, the EARTH Center teamed up with Nahant Marsh Education Center to host 17 environmental tech educators from across the United States and Guam for an immersive five-day professional development event. This unique experience focused on the programs and industries in the Quad Cities region of Iowa and Illinois that influence, and are influenced by, the Mississippi River's water quality and ecosystems.



Throughout the week, participants engaged in a range of activities, learning about water quality issues from diverse perspectives and exploring conservation efforts led by farmers, state employees, and non-profit organizations.

Our homebase for the week was Nahant Marsh, a restored and thriving urban wetland that was once a registered superfund site. Participants learned first-hand about the Marsh's impactful conservation and educational efforts via guided tours and presentations by Nahant Marsh employees. The experience also included time on the Mississippi River, exploring the relationships between the River and local industries, the effects of the local agriculture industry practices, restoration projects on the River, and getting up close and personal with the wildlife.



Local conservation experts shared hands-on resources for classroom use, ensuring that participants left with practical tools to enhance their teaching. The EARTH Center is grateful to all of the individuals, industries, and organizations that took the time to share perspectives and resources with the educators!

The EARTH Center Institute offers a unique blend of experiential learning, community building, and resource sharing. Don't miss the chance to join us for the next event and gain new knowledge and tools for your classroom! Our next experiential professional development opportunity will be held at Beaver Island in Michigan in June 2025. We are excited to delve into topics such as climate change in the region and beyond, cultural impacts and perspectives from indigenous leaders, undergraduate research opportunities happening on the island and more!

Apply for the June 2025 EARTH Center Institute at Beaver Island!

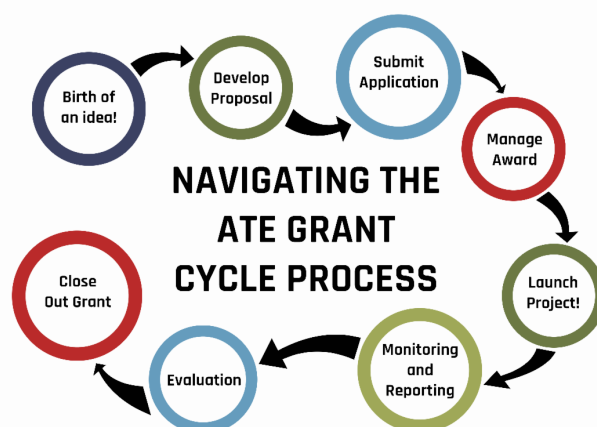


Tell us what YOU want from a Professional Development event! Fill out this survey to help us serve you better!

Mentoring Services

NSF ATE has long recognized that collaborative, peer-to-peer coaching is an effective way to improve mentoring relationships among the nation's Environmental Tech programs. The EARTH Center's Mentoring services can assist with any part of the grant life cycle!

- Creating NSF ATE grant proposals
- Applying for NSF ATE grants
- Executing and documenting the life of an NSF ATE grant
- Facilitating collaboration between community colleges and industry partners
- Creating Environmental Tech programs at institutions
- Student outreach...and more!



Connect with a Mentor!

Spotlights

We love to hype up instructors, educators, and students doing great things in the world of Environmental and Natural Resource Technology! Here's a spotlight on some of the participants from EARTH Center professional development events (and their students) this year!



Ana Munro of North Hennepin Community College (NHCC), has secured a \$30,000 grant from the Green Partners Youth Green Jobs program through Hennepin County. This is the second year that Hennepin County Green Partners has offered this grant program.

The grant will fund networking events, outdoor education gear, and leadership opportunities for students in NHCC's Outdoor and Environmental Leadership program.

This initiative, now in its third year, offers students hands-on experience in outdoor education and environmental justice, with the overall goal of increasing employment access for BIPOC "youth" (college students up to the age of 24) within the fields of environmental education. Students will benefit from mentorship opportunities with organizations like the YMCA, DNR, and National Parks Service, and will engage in events that explore green jobs as well as access to environmental internships. Ana is excited to continue and grow this program, stating: "As a college, if we work on building up this program, we could be uniquely positioned later on to help launch students into green careers, with job opportunities right here, within the state."

With a new Environmental Education degree launching in 2025, this grant will help build capacity for NHCC students to pursue careers in environmental leadership, further solidifying the program's impact.

Christian P. Teves, student and teaching assistant for John Jocson at Guam Community College, is pursuing a degree in Environmental Biology, with a focus on research. His student research project, "Evaluating Culturally Relevant Flora on Guam for Antimicrobial Properties," earned him the top award at the LSAMP symposium in Hawaii in July.

Christian's work is inspired by the need to validate traditional medicine in Guam, challenging the stigma against natural healers and highlighting the importance of indigenous remedies in a region where modern healthcare can be delayed during storms.



Dr. Jennifer M. Bell of Daytona State College (DSC) has been awarded the Workforce Development Capitalization Incentive Grant (Cap Grant) totaling \$272,865. This grant aims to enhance the college's Environmental Science Technology program by expanding research opportunities, repairing and upgrading facilities, and growing the seagrass nursery.

Located near the Indian River Lagoon, a crucial seagrass-based ecosystem, Daytona State College is dedicated to preserving local watersheds and supporting manatee populations affected by loss of seagrass beds.

The project builds on previous efforts funded by a \$7,500 grant, which initiated a watershed educational campaign supporting science fair projects and science teachers within the local K-12

community. Through these grant-funded efforts, students at DSC will gain hands-on experience in preserving the lagoon, working with faculty and industry partners. The grant will help prepare students for careers in environmental science by immersing them in critical conservation efforts and offering them opportunities to engage with industry leaders. The college's commitment to watershed health is integral to its educational mission and community investment.

For more information, please reach out to Dr. Bell at jennifer.bell@daytonastate.edu!



Connect with us!



EARTH Center | 1105 Kelly Dr | Sanford, NC 27330 US

[Unsubscribe](#) | [Update Profile](#) | [Constant Contact Data Notice](#)



Try email marketing for free today!